

For Over 2 Decades  
Delivering Next Generation Technology



# Cherrytec Intelisolve Private Limited

Corporate Brochure

## Cherrytec Overview

Cherrytec is a Global Enterprise IT company providing consulting, development and maintenance services, covering **SAP and IT Consultancy Services** through its offshore, onsite & dedicated delivery teams.



We align our internal processes and methodologies completely oriented to Client requirements. Our comprehensive consulting & management expertise, innovative problem solving methods and timely delivery enable ideal partnership for an array of IT services.

## Vision

To be a long-term, advanced solutions' partner to our global Clients

## Mission

To develop cutting-edge and perfectly engineered solutions that will empower our global Clients' businesses

## Values

1. Business Ethics - defines us as a Company
2. Professionalism - defines us as Individuals
3. Citizenship - defines our Contribution to Society

## Corporate Objectives

1. Profit - earnings that enable achieving our objectives
2. Client satisfaction
3. Competence
4. Employee satisfaction
5. Growth

## Collaboration that works

We believe that the best solutions come from collaborative relationships with our clients.

As your global consultant, we will work closely with you to understand your unique business transformation goals, design best-in-class solutions and devise the most efficient plan for implementing your strategy across the organization. We work in an open and transparent way so that we are always in control of your business, timelines and costs.

## Value Proposition



### Accountability the key to governance

We encourage entrepreneurial thinking to actively promote accountability, ownership and leadership at every level. We base rewards and recognition on talent and performance.



### Innovation in active pursuit

We continuously challenge the status quo, support and drive change.



### Excellence governs all our actions

We always aspire to be right the first time and every time.



### Urgency of actions to attain success

We leverage our competitive advantage of speed in thought, word and action.

## Quality Policy



Cherrytec's Quality Policy given below is our Corporate Anthem:

1. Maximize Client Satisfaction by Providing Value Addition & On-time Deliveries that Exceed Expectations.
2. Endeavor Delivery of Perfect Solutions through Continuous Process Improvements.
3. Establish Competence in Core Business Areas through Cutting Edge Technologies.
4. Provide an Environment for our Employees to Consultancy Enhance our Quality Processes.

## SAP

Cherrytec offers a comprehensive suite of services covering the entire SAP lifecycle to help customers implement, optimize and enhance value from their SAP investments.

The SAP Centre of Excellence adopts best business practices to improve operational efficiency as an extension of Client's development environment.

Technology Focus Group (TFG) within SAP team continuously strives to keep abreast with the latest technological advancements.

### SAP Services Functions

- SAP Licensing
- Full Cycle Implementation
- Post Implementation Support
- Functional / Technical Upgrades
- Global Rollouts
- Functional & Technical Consulting
- SAP HCM ESS & MSS
- SAP Netweaver
- SAP XI / PI
- **MM** – Materials Management
- **SD** – Sales distribution
- **FICO** – Finance and control
- **PP** – Production planning

Our key expertise includes e-business leadership; Enterprise Application Integration makes us a preferred service provider for end-to-end SAP needs.

We engage with our Clients on various flexible engagement models viz., Onsite, Offshore and Near-Site.



Cherrytec has expertise in various Country Specific Taxation requirements including all Direct and Indirect Taxation such as Withholding Tax/TDS configurations, Excise Duties & CESS, Central Sales Tax, Service Tax, CENVAT, etc which can be quickly implemented to address any kind of complex taxation requirements for Clients.

## IT Consultancy

Cherrytec's IT Consultancy services provide resource augmentation across the IT technology spectrum. We engage with our Clients with various flexible engagement models viz., Onsite, Offshore and Near-site.



### The Consultancy Advantage

- Increase in Team Productivity without increase in Head-Count
- Managed Resources (No Recruitment/HR Hassles & Costs)
- Experienced & Specialized Resources
- Reduce Dependency on Individuals
- No Training Costs
- Hassle-free Services (No Admin/Logistics hassles such as Visa, Travel, Accommodation, Boarding, Conveyance, Insurance)
- Specialized Services available for both Short-term & Long-term Assignments

## Industries Served



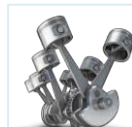
Manufacturing



Petrochemical



Logistics



Automotive



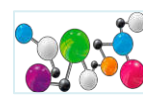
Retail



Trading



Banking



Pharma



Engg. & Const.

## Team Cherrytec

Cherrytec has an enviable team with composite skills in multiple domains and is advantageously positioned to undertake variety of projects in diverse business verticals.

Talent transformation is an ongoing process at Cherrytec, through which, qualified and experienced domain consultants with both Functional & Technical expertise are fostered.

Trained talented professionals of Cherrytec are currently servicing Clients across multiple Industry domains.

## Differentiators



### Transformation capability

Our process reengineering capability enables us to review client processes and improve effectiveness of their businesses.



### Strong focus on select domains

We combine our tenured experience with deep domain knowledge to provide a competitive edge for our Clients.



## Client centrality

Our account management team, whose members are present onsite, near-site and offshore, provide subject matter expertise and ensure that all business issues are prioritized and expeditiously resolved.



### Operational excellence

Our capabilities and methodologies help migrate processes seamlessly and improve them on an ongoing basis creating greater value to clients' businesses.



### Integrity guiding our conduct

We are transparent and lead by example to keep interest of stakeholders integral to the principles and values we cherish. We listen, give space and are open to feedback.

## Socio Economic Contribution (S-E-C)

S-E-C in Cherrytec is primarily done by One-to-One Mentoring as each person encourages & motivates the other, towards a more purposeful & effective lifestyle. Towards this, there are 3 areas that each of us can assist by making these a part of our day to day approach :

1. Following discipline in any and everything we do
2. Providing a helping hand to people around us in any way we possibly can
3. Showing the right path forward to people around us

 **India**

Cherrytec Intelisolve Private Limited  
Jamals Chambers, 1<sup>st</sup> Floor 49 Anna Salai,  
Saidapet Chennai 600 015, India  
eMail: sales-in@cherrytec.com

 **Kuwait**

Cherrytec Intelisolve Private Limited  
P.O. Box 5092, Safat 13051 Kuwait  
eMail: sales-kw@cherrytec.com

 **Singapore**

Cherrytec Intelisolve Private Limited  
101 Cecil Street, # 23-12 Tong Eng  
Building, Singapore 069 533  
eMail: sales-sg@cherrytec.com

 **USA**

Cherrytec Corp  
California, USA  
eMail: sales-us@cherrytec.com